

Example of a hanging sleeve and slat.

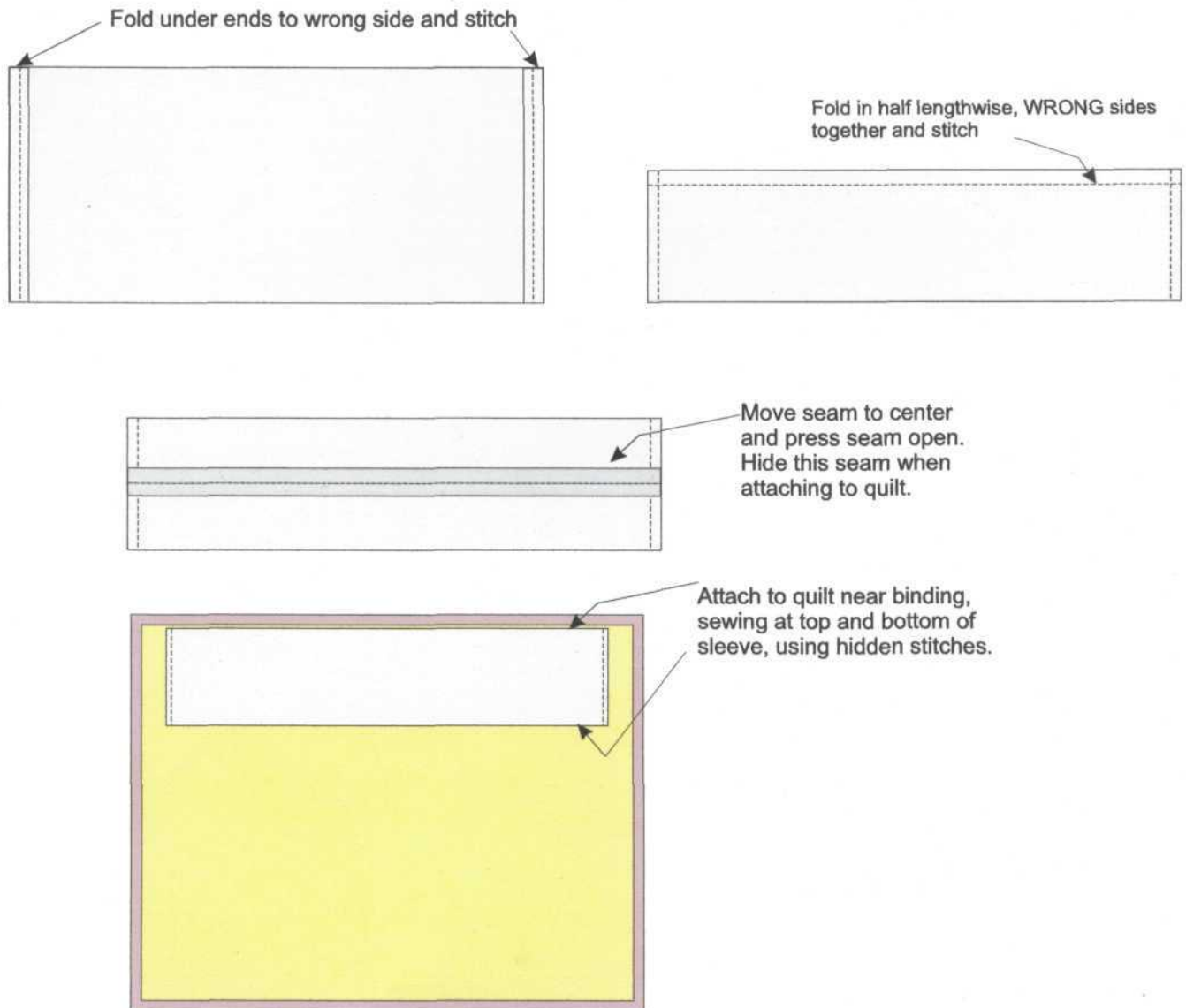
For consistency, a standard 4" (finished) hanging sleeve is used by many quilt competitions. It is created with a piece of fabric about 8 1/2" to 9" wide. The length is determined by the width of your quilt. Normally, the finished sleeve should be about 1" smaller on each side than your quilt, and add a turn-under allowance for each end to figure the cut length of fabric.

Turn under each end and stitch down.

Fold the fabric lengthwise (wrong sides together), and stitch 1/4" from edge. This will create a tube. Move the seam to the center of the tube and press the seam open.

Center this tube at the back of the quilt top (with the lengthwise seam hidden), below the binding, and stitch to quilt with hidden stitches. Raise the lower edge of the sleeve about 1/2" to create some give for the hanging slat. Tip: insert the slat & pull up the 1/2" making sure that it is straight across & then pin the lower edge in place. Slipstitch.

If the quilt is very wide it is recommended that 2 separate sleeves be made with a space in the center of the quilt in case an extra hanging support is needed.

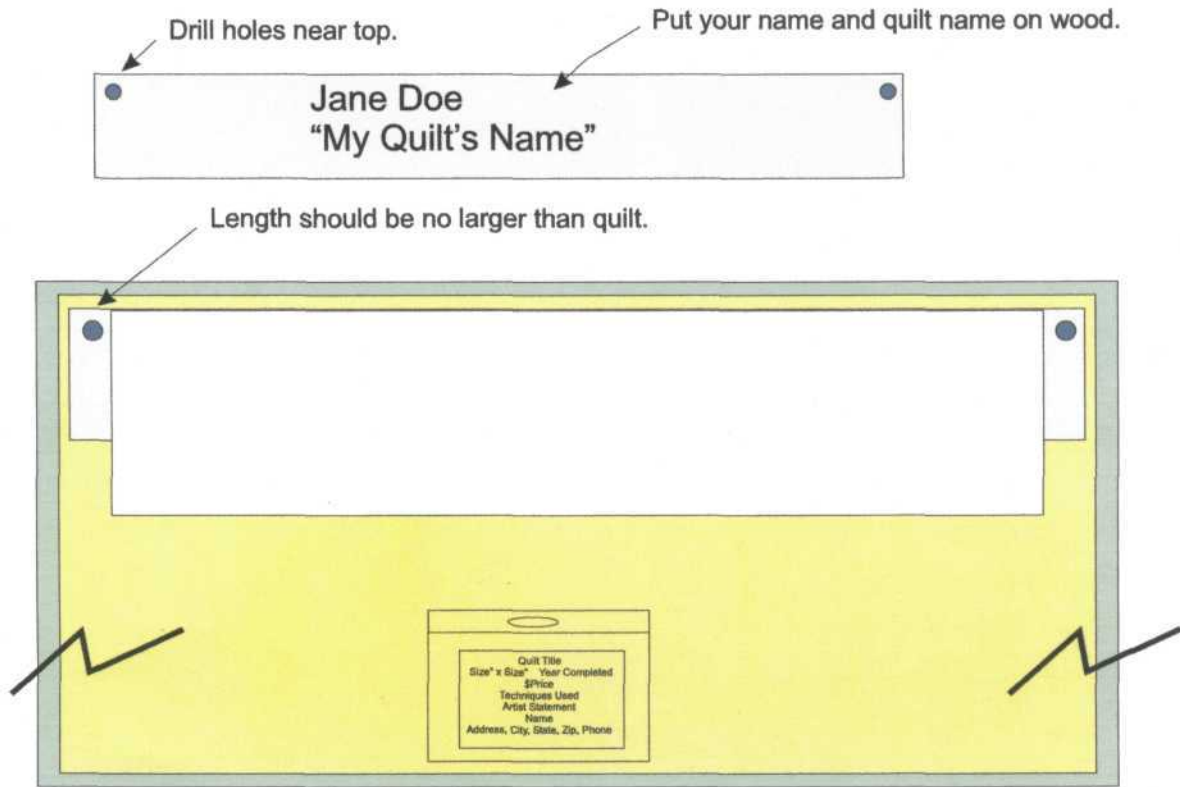


Example hanging slat.

A flat piece of wood with holes drilled in the ends works well for hanging your quilt. Drill holes near the top, near the ends, large enough for a small nail to easily thread through. Put your name and the name of the quilt on the wood. The length should be just larger than your hanging sleeve, but no larger than your binding, so it disappears when hung on the wall.

A yardstick is a good choice of wood. You can usually buy these at a home center for less than a dollar. You can also purchase wood called "lattice" which is about 2" wide and 1/4" thick - an 8 foot piece costs less than \$4.

It is recommended that the wooden slat be sealed with some type of sealer to prevent the wood from harming the quilt. Sealers of acrylic or polyurethane do come in spray cans and are available at hardware stores.



Using a standard sandwich bag (zipping kind), pinned to the back of the quilt, create an index card with the quilt's title, size, date information, price (or Not for Sale), techniques used, artist's statement, artist's name, address, and phone. A sample card would look like this:

Quilt Title
Size" x Size" Year Completed
\$Price
Techniques Used
Artist Statement
Name
Address, City, State, Zip, Phone

An optional item that you might consider for protecting your quilt in transit, is a cloth bag with your name and phone number.

Remember to sign and date your quilts!